

Professional body composition analysis:

BODYSTAT[®] 1500

TouchScreen

THE SCIENCE BEHIND CLINICAL BODY ASSESSMENT



www.bodystat.com



ADVANCED BODY COMPOSITION THE HEALTH, FITNESS & LEISURE

TAKE YOUR BUSINESS TO THE NEXT LEVEL

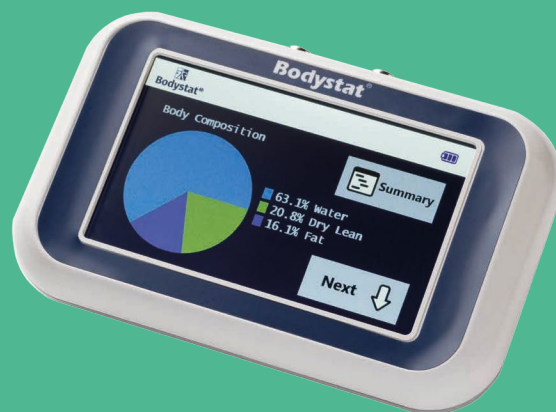
Primarily configured for the health, fitness, weight-management and leisure industries, but also used extensively in research and medical applications, the Bodystat®1500 Touch Screen is our world-class body composition measurement, analysis and tracking device. Unique in its simplicity of use and depth of analysis, it is a fundamental tool used by fitness centres around the world.

The health industry is at an all time high and all forecasts are for massive growth as consumers become increasingly aware of the importance of personal health. The Bodystat 1500 is uniquely positioned to help fitness business owners capitalize on this unprecedented growth and capture increased market share and revenues.

Promoting your use of the 1500 will show both new and existing customers that your fitness centre operates at the very highest levels of personal health and fitness management – this is what the modern consumer is looking for. This will encourage increased use of your facilities (generating even more revenue) and new user uptake.



ANALYSIS FOR THE INDUSTRY



INCREASE REVENUES, ENGAGEMENT & CLIENTS!

INCREASE ENGAGEMENT

The Bodystat 1500 **Touch Screen** gives your members the advanced whole-body composition analysis they demand and is a great way to encourage increased use of your health and fitness facilities.

INCREASE REVENUES

The advanced analysis from the Bodystat 1500 **Touch Screen** is something that many of our fitness centre users around the world charge for. Not only will it increase revenue from existing gym members but it is also a powerful USP to attract new members.

INCREASE REFERRALS

When your members see the depth of the Bodystat 1500 **Touch Screen's** whole-body composition analysis, they will share their health and fitness statistics within their social circle – and this will gain you new members through the power of personal referrals.



GIVE THEM WHAT THEY

THE BODYSTAT® 1500

Advanced whole-body composition analysis gives your members what they are increasingly demanding:

A much deeper level of understanding of the status of their body & health!

The unprecedented growth of the health and fitness industry is predicted to continue growing, and the Bodystat 1500 fills the void between customer expectations and traditional, unreliable body measurement devices.

The scientific assessment and monitoring of an individual's state of health is now an essential part of medical research, general medical practice, fitness assessment and sports training programs. Body weight alone no longer provides an accurate indicator of health status. Rather, body composition - the proportion of lean and fat in the body - has become one of the key health indicators.

The problem with BMI & weight-only measurements:

An increase in extracellular water and a decrease of body cell mass cannot be detected in overall weight, even if fat free mass changes OR there is no change in the overall bodyweight.

Unless you are measuring the separate components of weight (e.g. lean, fat and water) you or your client might actually be losing lean and the overall weight is masked up by an increase of body water.

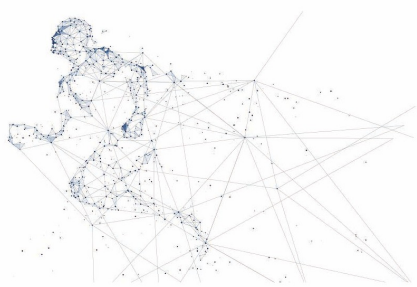
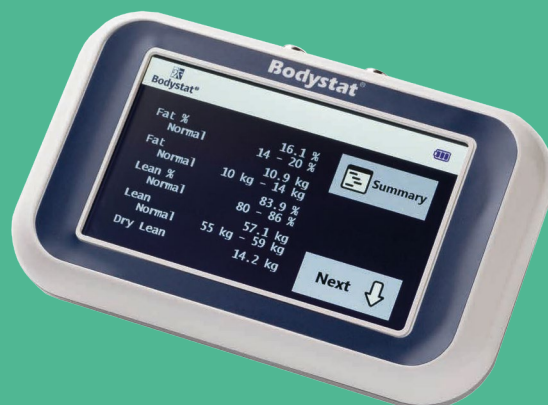
The Bodystat® 1500

Touch Screen provides comprehensive displays on the colour touch screen and analysis on all this:

- + Body fat percentage and fat weight
- + Lean (fat-free) mass
- + Dry lean weight
- + Total body water in percentage and litres
- + Normal ranges for body fat, lean, total weight and water
- + Basal metabolic rate (BMR)
- + BMR/body weight
- + Average daily calorie requirement
- + Body mass index plus normal range
- + Waist/hip ratio.



WANT



BIA (Bioelectrical impedance analysis) offers superior lean/fat measurements that override the failings of traditional BMI (Body Mass Index) readings and give serious fitness fanatics genuine results that take into account muscle, water and fat in the measurement of their core health.

- + Suitable assessment for adults from 18 years upwards. Additional equations available in Body Manager software for Children aged 6-17
- + Portable and battery operated
- + Responsive, clear to read colour touch screen with user friendly interface
- + USB for downloading directly to software
- + Body Manager software available (See page 7)
- + The most advanced body composition technology from one of the world's leading developers of bio-impedance analysis (BIA) technology
- + Backed by more than 65 years collective experience in BIA and fitness assessment.



BODYSTAT® 1500 Touch Screen SPECIFICATION

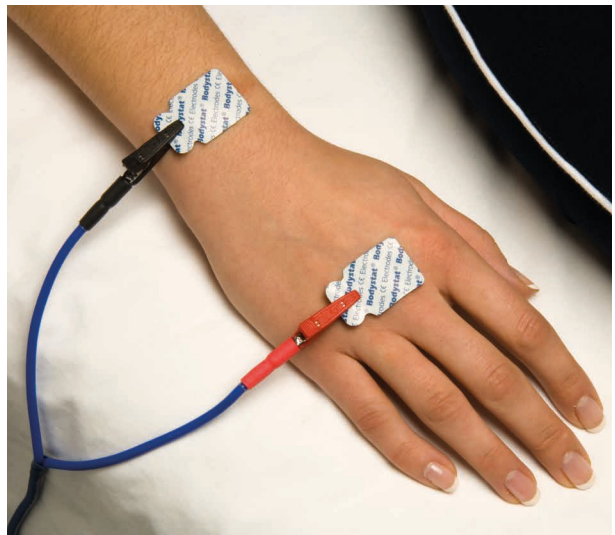
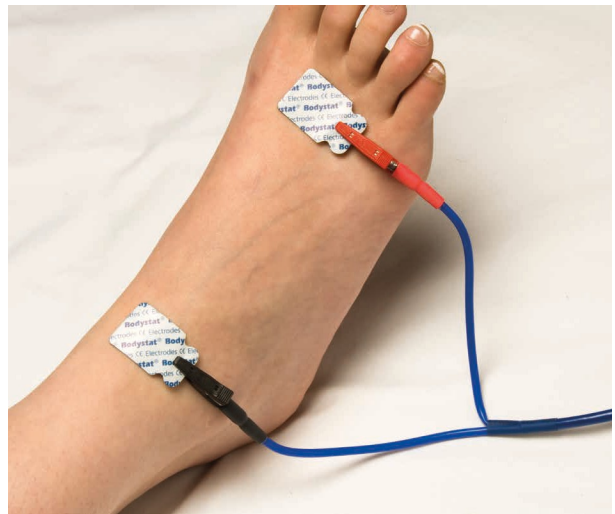
MEASUREMENT	
Technology	Bio-Impedance Analysis (BIA)
Impedance Measuring Range	20 - 1300 ohms
Accuracy	Impedance 2-3 Ω
Test Current	620 Micro-Amps R.M.S. (Root Mean Square)
Frequency	50 (KiloHertz)
Calibration	A calibrator is supplied for independent verification from time to time.
Configuration	2 LEMO wires (removable)
Computation Time	3 seconds
PC Communication	USB Connection
GENERAL	
Operating Temperature	+ 5 °C to + 40 °C
Storage Temperature	0 °C to + 60 °C
Relative Humidity	Less than 70% R.H. (relative humidity) up to +60°C non-condensing. It should not be used in an area where condensation could form on the inside of the unit housing.
Atmospheric Pressure	860 hPa to 1060 hPa
Internal Power Source	Duracell MN1500 alkaline batteries, 4xAA(LR6) 1.5v non-rechargeable
Dimensions	166mm L x 105mm W x 36mm H (5 inch colour Touch Screen)
Weight	Unit weight - 362 grams
Low Battery	A battery power bar can be seen in the top right corner of the display. If the unit has been switched ON and no data has been entered for 2 minutes, an alarm signal sounds to warn that the unit is still on and the battery is in use. Automatic shut off if left unattended for 3 minutes.
Service	There are no serviceable parts other than the need for periodic battery replacement.
Quality Standards	Manufactured to strict ISO 13485:2016 quality standards. Fully accredited by the Medical Devices Directive (MDD) with it's CE1639 marking and for EN60601, also FDA cleared.

EASY TO USE, INSTANT RESULTS & NON-INVASIVE

USING YOUR BODYSTAT® 1500

Using your Bodystat 1500 couldn't be easier – no training is required and the whole process is completely non-invasive, an important point for the person being measured. The Bodystat 1500 has two main cable leads of which each lead has two crocodile/alligator clips, red and black. These clips are attached to the exposed tabs on the electrodes. The subject's gender, age, height, weight and optionally, activity level and waist/hip measurements are entered using the three keypads.

It works by passing a safe battery generated signal through the body and measuring the bioelectrical impedance at a fixed frequency of 50 kHz. Once the test has been performed a complete body composition analysis is displayed on the Touch screen within three seconds comprising body fat, lean body mass, total body water and optimal ranges. Metabolic rates, BMI and waist/hip ratio are also displayed on the Touch screen.

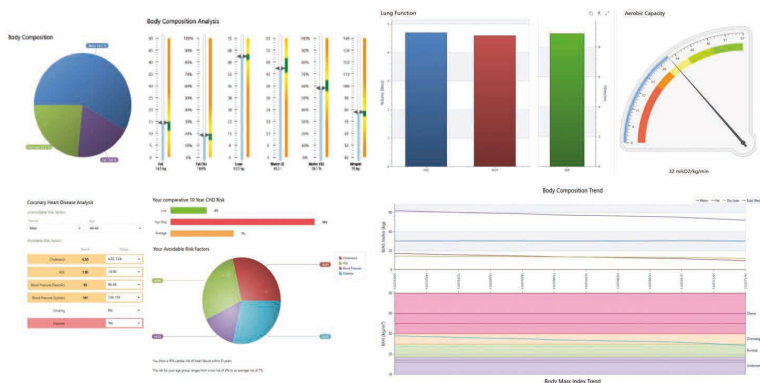


ACCESSORIES & DELUXE PACK

BODY MANAGER SOFTWARE

Designed with you in mind, this windows based program is ideal for keeping track of your client's progress and providing trend reports to keep your client motivated. New key features include:

- User friendly interface
- Simple USB connectivity
- Download data instantly from your device
- Includes Health Screening, Hydration, Body Composition & Trend reports.



Optional
Extra

BODYSTAT® PRINTER

- Portable thermal printer fitted with blue-tooth offering clear, immediate print out of results at point of measurement.
- battery operated and light weight.

1500 TOUCH DELUXE PACK

Our fantastic value 1500 touch deluxe pack is a comprehensive testing and reporting tool enabling you to provide quick & easy health and fitness analysis for you and your clients.

The deluxe pack Includes:

- 1500 Touch device
- Thermal Printer
- Full Body Manager Software
- Carrying Case.

The small thermal printer provides a clear data print out that can be created at point of measurement for the client to keep.

Using the Body Manager software, reports can be exported and sent to the client as a follow up from the printed test.

The carrying case keeps the full BodyStat® deluxe pack safe and secure along with leads and electrode accessories. This portability allows you to take the pack to a number of locations including PT sessions, businesses for employee health screening and sports clubs for athlete testing.



ABOUT BODYSTAT

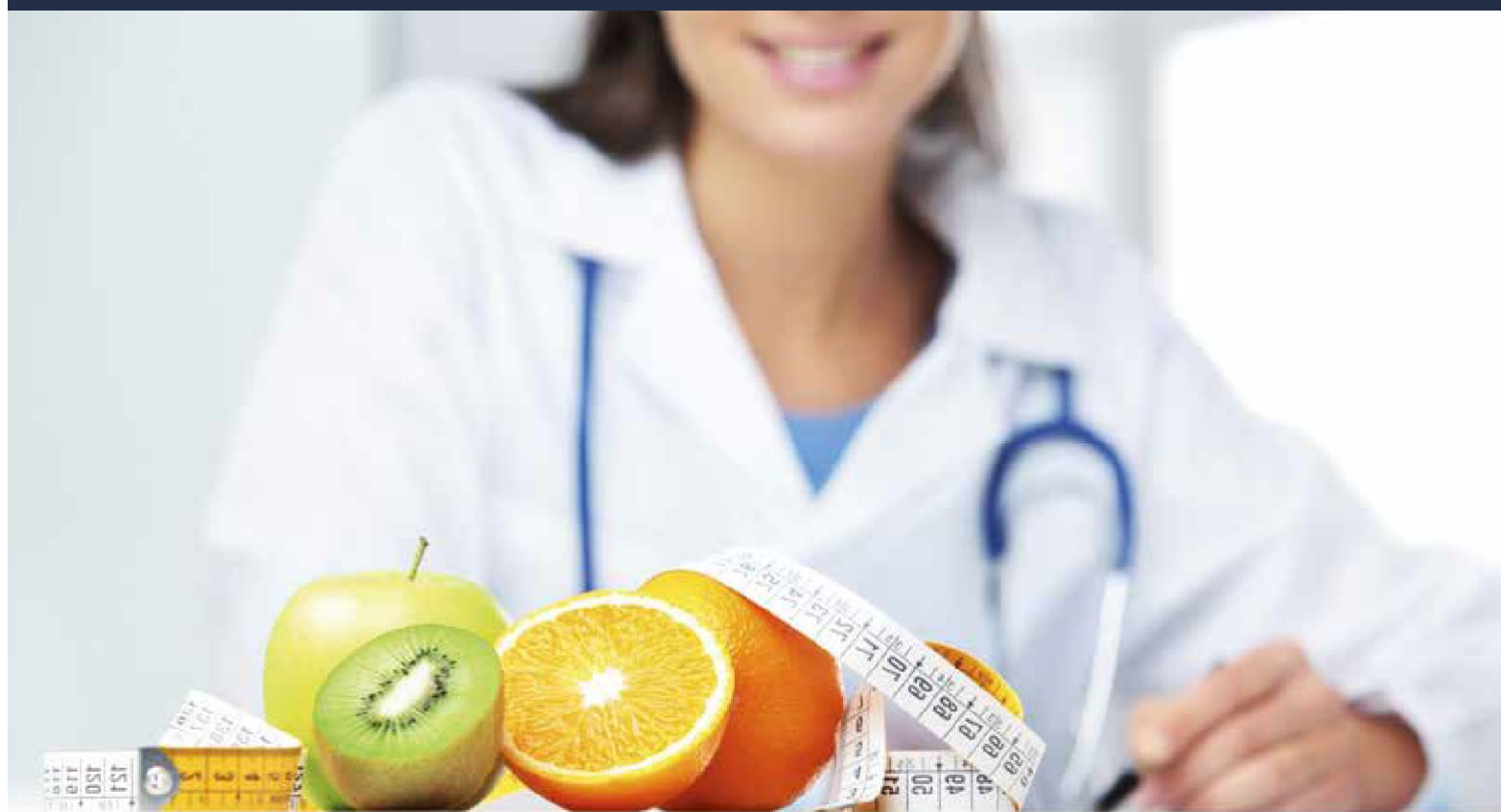
Bodystat Ltd, based on the Isle of Man (British Isles), has been established since 1990 and is a registered ISO 13485:2016 company. We specialise solely in BIA Technology and are dedicated to expanding the knowledge of this to improve health and well-being. We have an extensive range of research papers dedicated solely as non-commercial, free materials for educators.

Our devices are manufactured in Europe, made to the highest specifications and use only the best electrical components. The high quality of our devices ensures accurate results that are both reproducible and reliable.

Bodystat Limited

Ballakaa • Ballafletcher Road
Cronkbourn • Douglas
Isle of Man • IM4 4QJ • British Isles

Tel: +44 (0) 1624 629571
Fax: +44 (0) 1624 611544
Email: info@bodystat.com
Web: www.bodystat.com



Bodystat

BODY COMPOSITION TECHNOLOGY