

## Instructions to Download Body Manager Pro for the MDD

There are THREE steps to downloading and installing the Body Manager Pro software:

### 1) Download the software

To download the software, go to: <https://download.bodystat.com>  
Choose your device (Bodystat 1500MDD), enter the 6 digit serial number.  
Then download the software by clicking on the Yellow Download button.

### My Serial Number

Enter new Serial Number

### Bodystat 1500MDD



### Bodystat 1500MDD Software

Download

Certificate

Current Release: 6.0.1.448, released on 03-Oct-2016

You have downloaded this release 1 times

SERIAL NUMBER: 399999

### 2) Save the certificate file

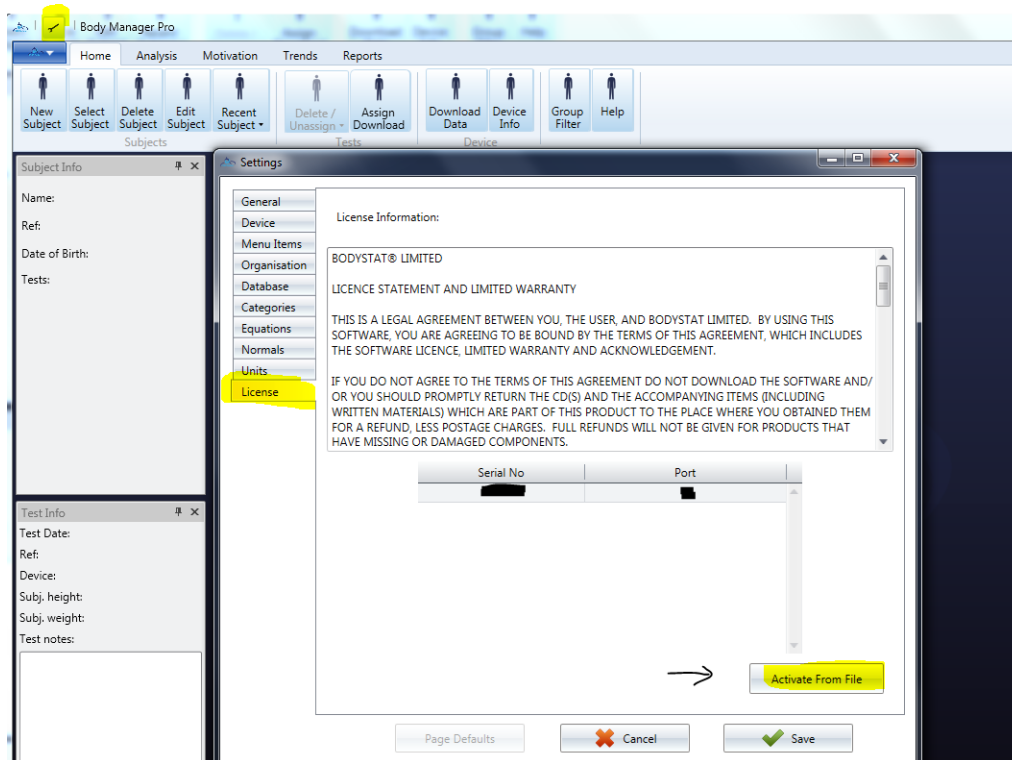
Then you need to save the certificate file by pressing the **purple button**.

The PC will save this cert file either in your downloads folder (eg in Firefox or Chrome) or will prompt you to ask you were to save it. **Remember this location.**

### 3) Activate the cert file within the software

*Settings/Licence/Activate from File (from the location you have saved the cert file). See screen shots below:*

Once you have saved the cert file on to your PC, activate it within the software by going to Settings (spanner icon in top left corner) / License and "**Activate Cert File**". Browse to the place where your cert file has been saved and press "Save". Then restart the software and your serial number should be listed in the License page.



Find the location of the previously saved cert file to activate.

Save, and restart the software.

Here is the video to watch that explains what to do:

#### **For BIAS Software Download Assistance:**

For a video tutorial on **Activating the Cert File**, please [click here](#):

For a video tutorial on **Downloading the BIAS Software**, please [click here](#).

#### **4) Pairing your device**

After you have activated the certificate, you are now ready to pair your unit with the software.

Select the Home Tab and then Device Info button. Your USB Bluetooth Adaptor should be connected and installed for use (see section "Bluetooth").

The screen will appear as shown opposite.

To ensure that your Bluetooth is fitted correctly, you should have a tick next to the Bluetooth Radio Information. Sometimes, the tick will only show once you have select search for new device. If your Bluetooth is not fitted or enabled, then an error message will appear stating that "No supported Bluetooth Radio module detected". Ensure that the USB is correctly inserted or your fitted Bluetooth is enabled and click the Device Info or Reload Device info button again.

The Bodystat software has the facility to automatically search and pair your Bodystat unit with the computer and software.

We are now ready to begin pairing a new Bodystat device with the computer. Switch the Bodystat device ON. The LCD should read:

TEST NUMBER = X

Click the Scan for new device Button and then the Bodystat software will begin searching for Bluetooth Devices. Whilst the software is searching blue circles will appear at the bottom of the screen.

If no message is displayed and the software has finished searching (no blue circles), then no device was found. Ensure that the Bodystat unit is switched ON and that the TEST NUMBER screen is displayed. Then click Scan for new device button again and the software will proceed to search again.

Once the software has searched and found a device, a screen will appear asking if you want to pair (authenticate) the device. Click YES to proceed and the software will then pair the device to your computer.

On completion of pairing, the Bodystat software will automatically allocate the appropriate Comm. Port and the appropriate device information will appear on screen.

You can now download from the device and therefore, click the Download data button to start communication and download the tests.